

# Abe



# Abe



# Bil

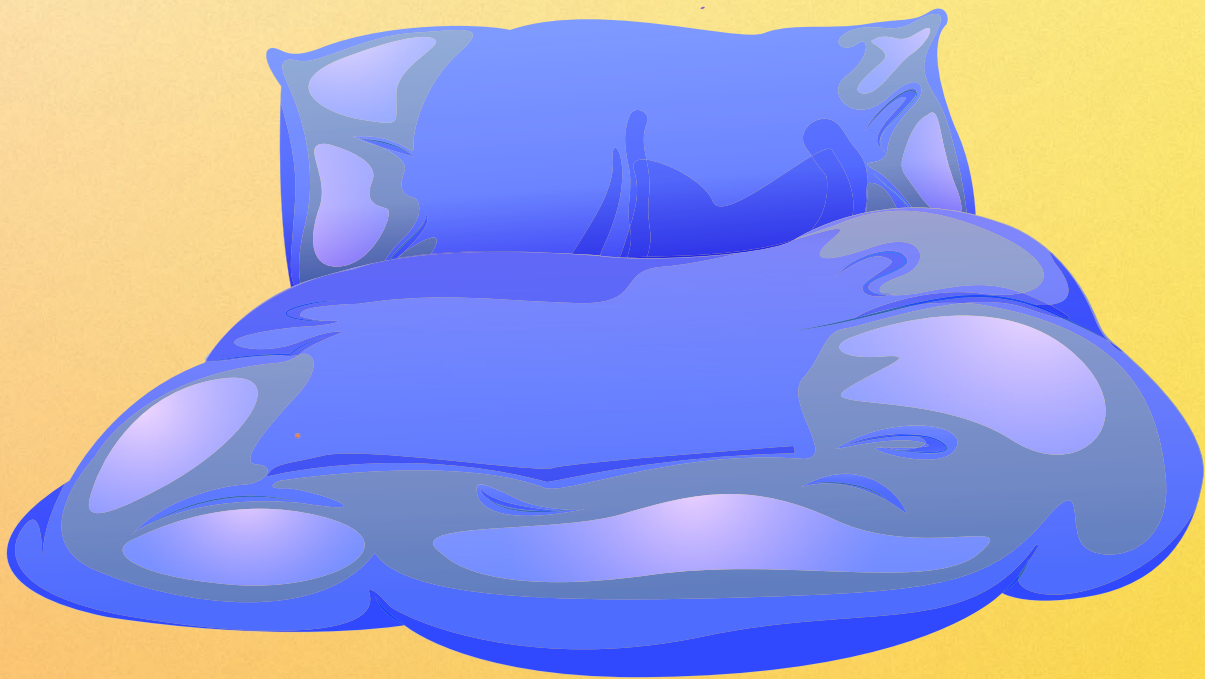
# Bil



# Cykel

# Cykel

# Dyne



# Dyne

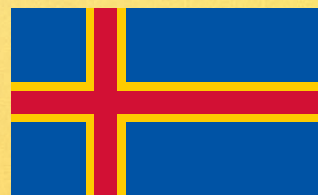
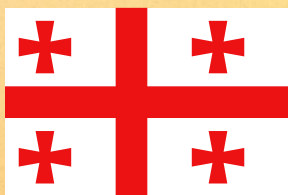
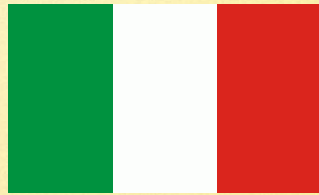
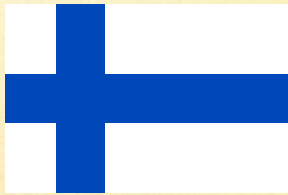




# Elefant



# Elefant



# Flag

# Flag



# Gris

# Gris



# Hest

# Hest



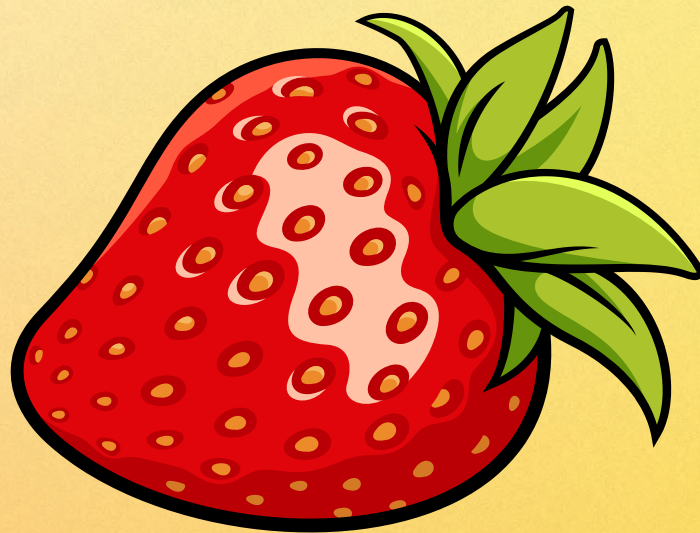


Is



# Is

# Jordbær





# Jordbær



# Kage



# Kage



# Løve



# Løve





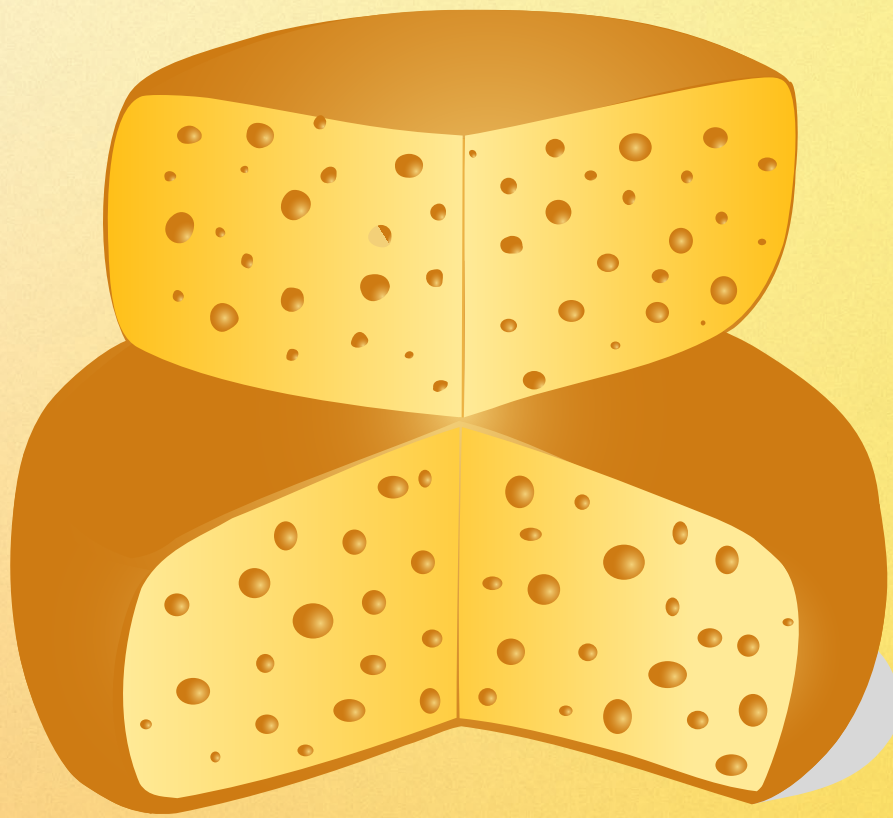
# Mus

# Mus



# Næse

# Næse



# Ost

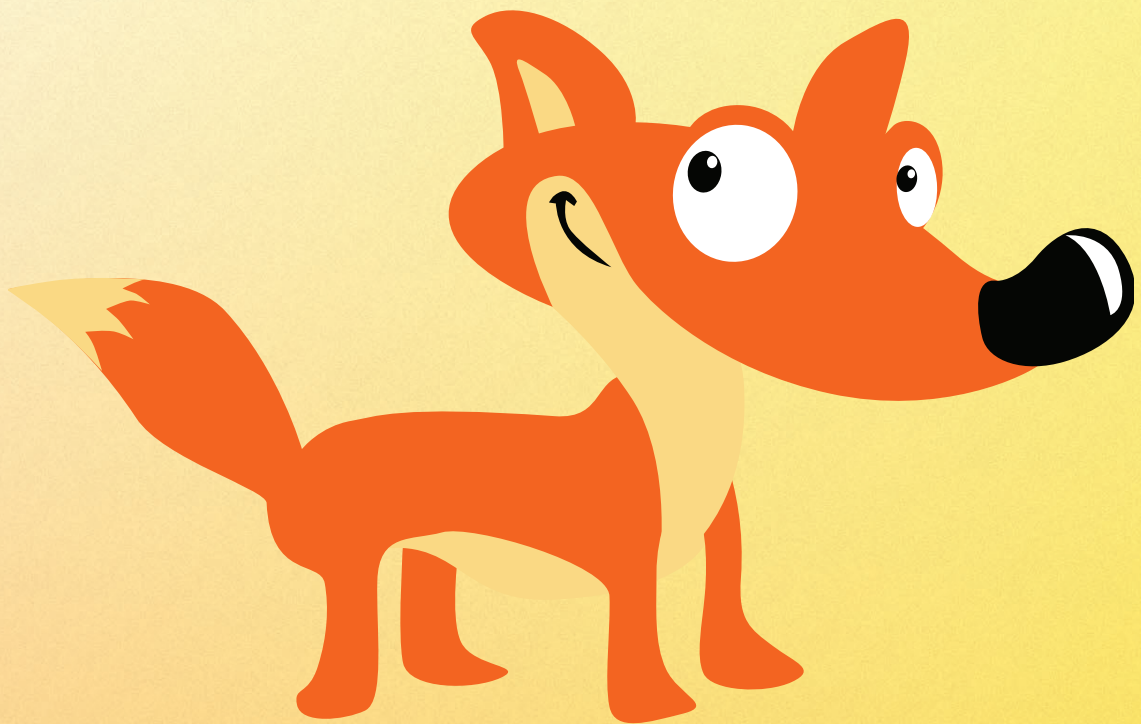
# Ost



# Pige

# Pige





# Ræv

# Ræv



# Sko

# Sko

# Tog



# Tog



# Ur

# Ur





# Vej



# Vej



**WC**

# WC



# Yver

# Yver



# Zebra



Den Aktive Bogreol

# Zebra



Den aktive bogreol: Eder og ordsprog - Vrøvleord med Tante T





# Æble

# Æble



# Øre

# Øre



Å I

# Å I