

Gå



Stå



**Sort**

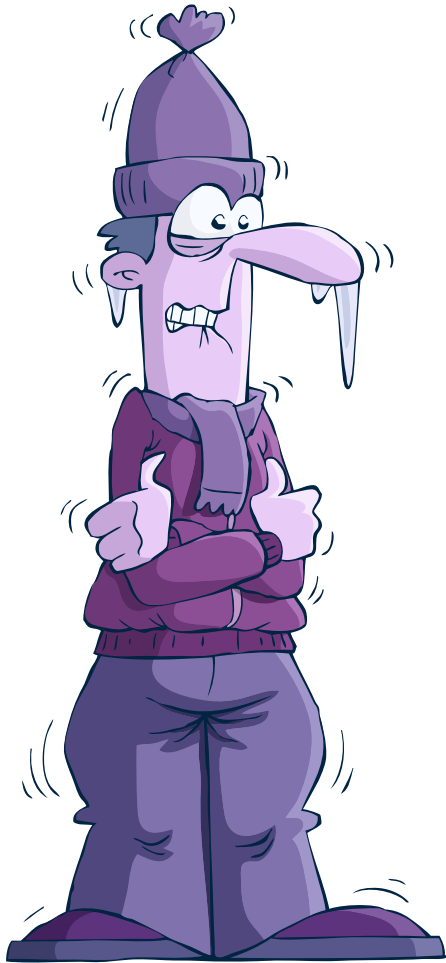
Sprogfitness: Stå - Løb - Ordkort

**Hvid**



Sprogfitness: Stå - Løb - Ordkort

**Kold**



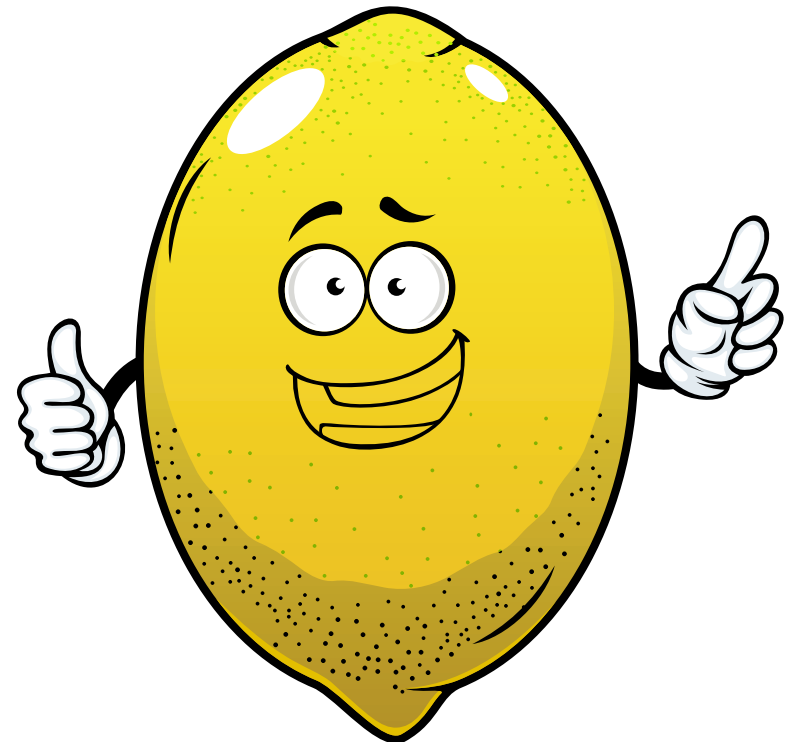
**Varm**



Sød



Sur



**Tung**



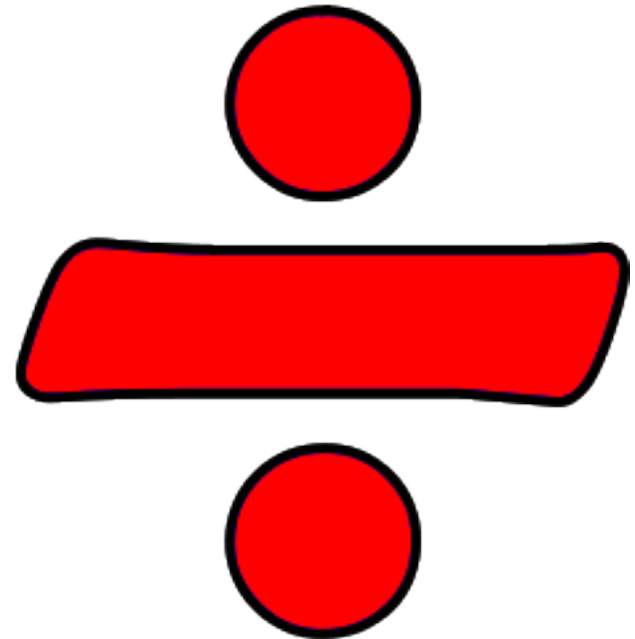
**Let**



**Plus**



**Minus**



Høj



Lav



Ja

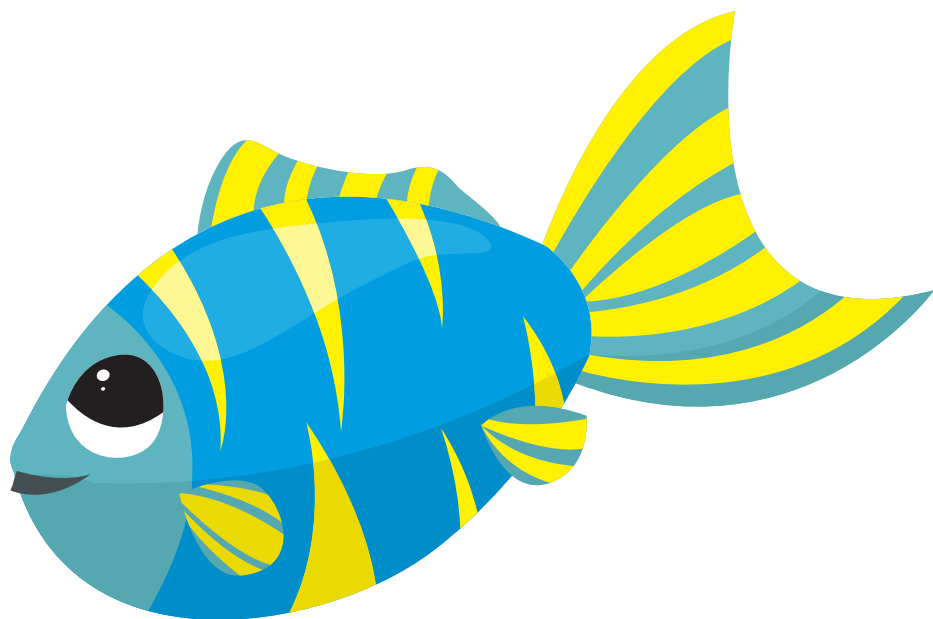


Nej

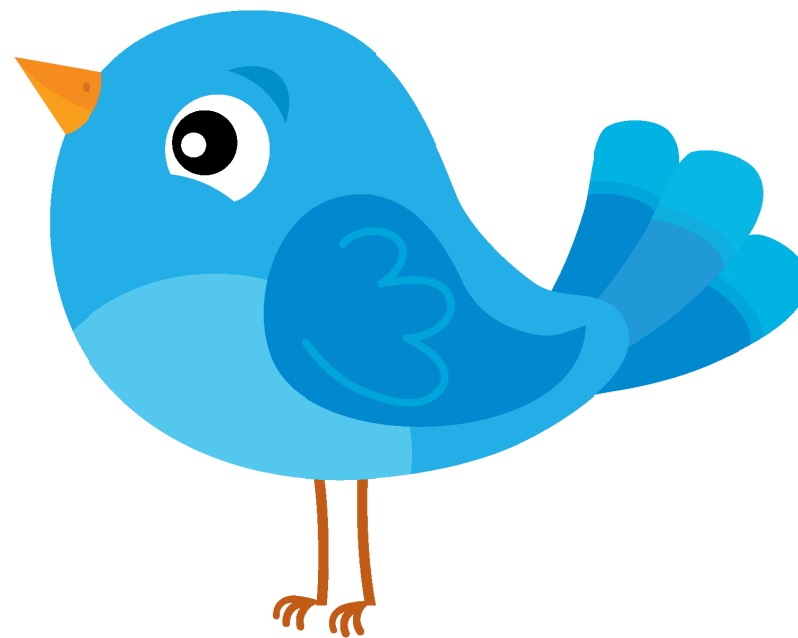




**Fisk**



**Fugl**



**Kniv**



Sprogfitness: Stå - Løb - Ordkort

**Gaffel**



Sprogfitness: Stå - Løb - Ordkort



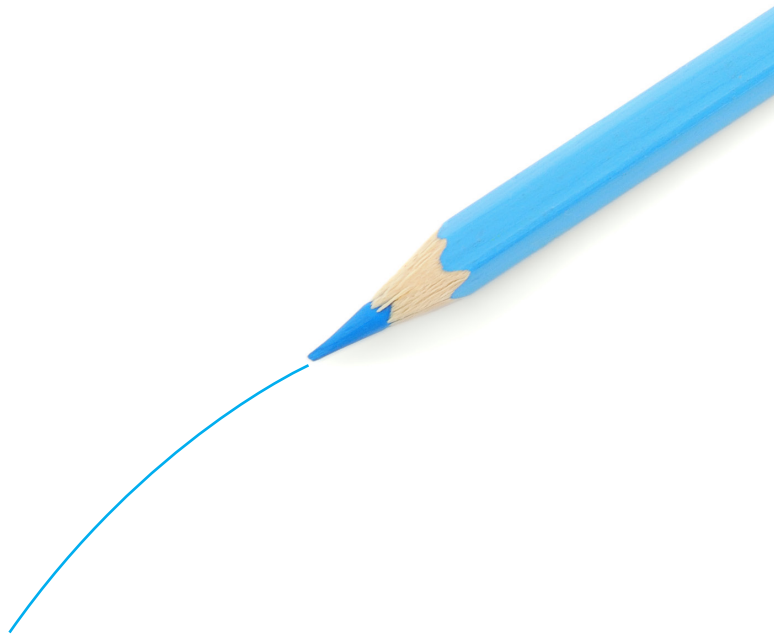
Ild



Vand



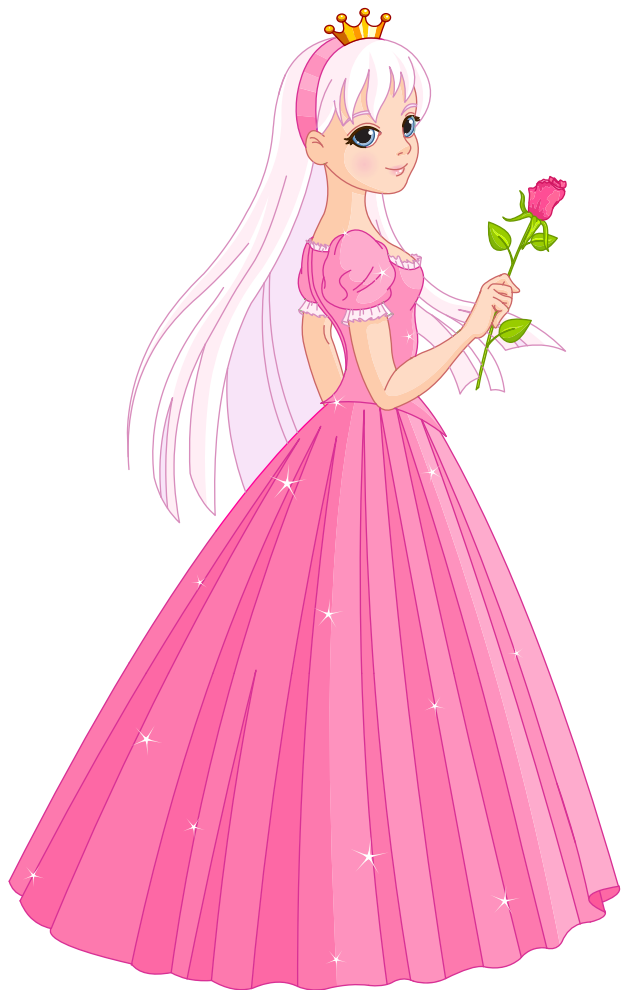
**Tynd**



**Tyk**



God



Sprogfitness: Stå - Løb - Ordkort

Ond



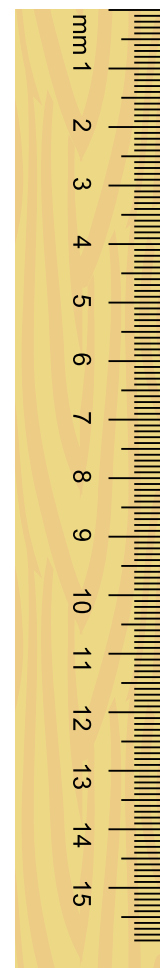
Sprogfitness: Stå - Løb - Ordkort



**Kort**



**Lang**



Ung



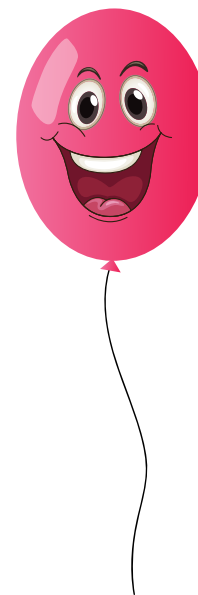
Gammel



Stor



Lille





Lys



Mørk



# Sommer



# Vinter



Pige



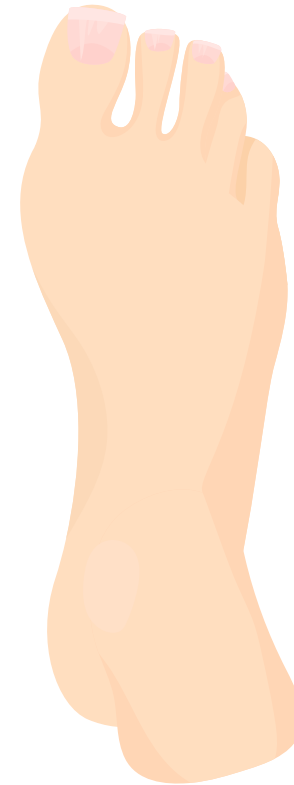
Dreng



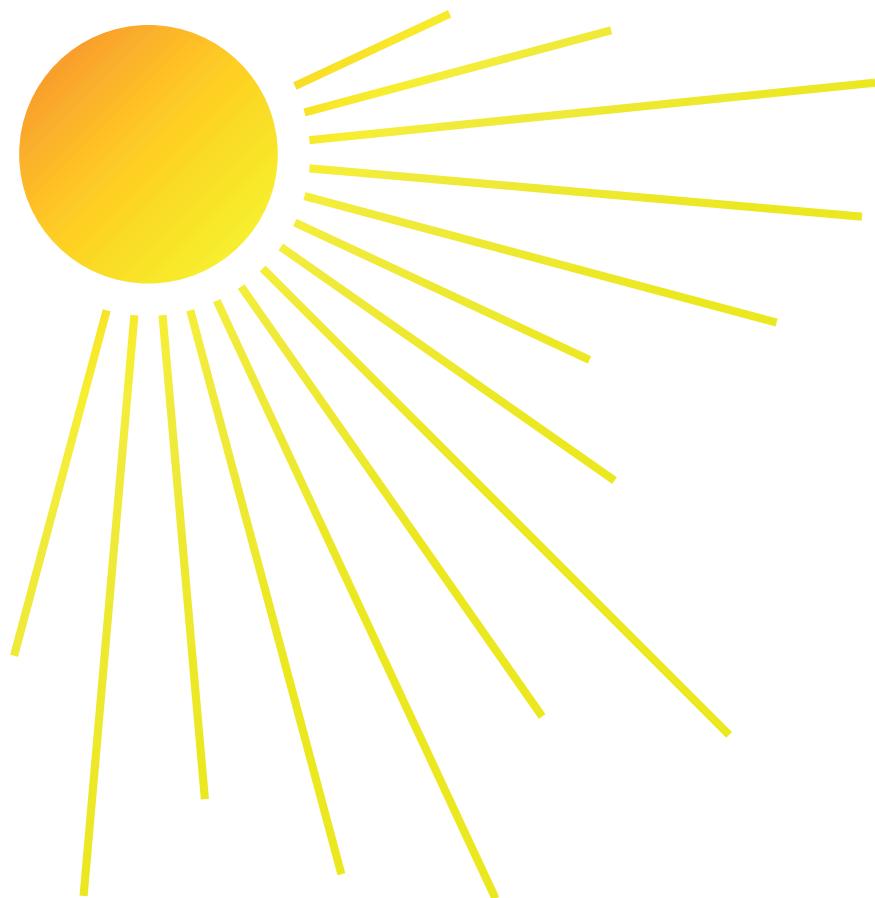
# Hånd



# Fod



Sol



Sprogfitness: Stå - Løb - Ordkort

Måne



Sprogfitness: Stå - Løb - Ordkort



**Salt**



Sprogfitness: Stå - Løb - Ordkort

**Peber**



Sprogfitness: Stå - Løb - Ordkort



**Glad**



**Sur**



Træt



Frisk

